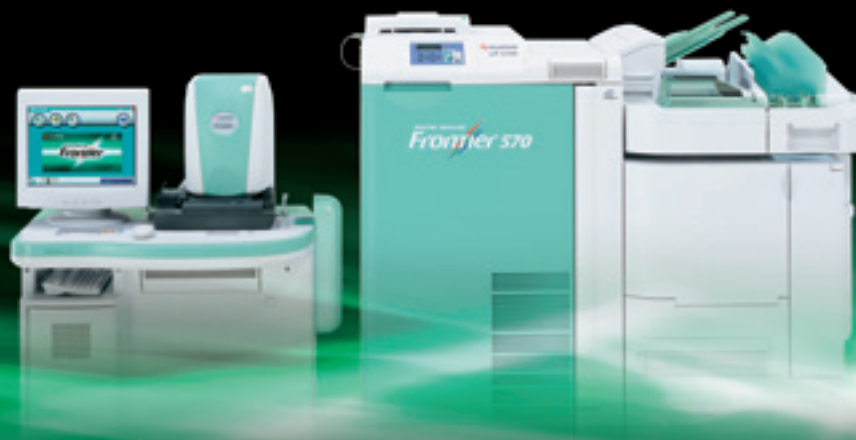




NEW DIGITAL MINILAB

Frontier 550/570

Super-high-speed digital processing with high-level capacity and efficiency



A new threshold in high-speed production – “Prints in Minutes” service

Fujifilm’s Digital Minilabs Frontier 550 and 570 represent a quantum leap in customer retail services. Instead of one-hour service or same-day service, now your customers hand over their film or digital media and receive their finished prints minutes later. Frontier 550/570 also deliver the highest image quality ever from a Frontier minilab, with advanced image enhancement and improved print resolution. Your shop can look forward to seeing more satisfied customers, as the Frontier’s new features create expanded opportunities for your business.

Frontier 550/570 with high-speed processing technology

Starting with the high-speed, high-precision scanner, the Frontier 550/570 have been engineered for greater productivity. Other elements include the high-speed conveyor belt, the highly efficient multi-path chemical processing system, and the fast yet energy-efficient drying system. Sharp, high-resolution images and pure, vivid colors are provided by the Fujifilm-developed high-speed laser exposure unit.



Frontier 550

Digital Prints

1,700 prints/hour (Frontier 570)*

1,210 prints/hour (Frontier 550)*

* 4R size

Increased processing capacity allows you to handle more business and offer faster services to your customers.

	Digital (4R size)	Film (4R size)
Frontier 570	Approx. 1,700 prints/hr	Approx. 1,800 prints/hr
Frontier 370	Approx. 1,100 prints/hr	Approx. 1,450 prints/hr
Frontier 550	Approx. 1,210 prints/hr	Approx. 1,210 prints/hr
Frontier 350	Approx. 900 prints/hr	Approx. 1,050 prints/hr

Performance varies depending on processing capabilities of the Imaging Controller.

Advanced Frontier hardware and supporting Fujifilm products are the keys to “Prints in Minutes” service

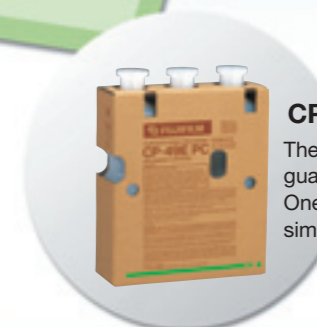
Fujifilm’s proprietary image-development technologies make the difference in processing speed.



Fujicolor Crystal Archive Paper TYPE II

Fujicolor Crystal Archive Paper Type II

Strongly recommended as the optimum color print paper for the Frontier 550/570, Fujicolor Crystal Archive Paper Type II paper offers faster results along with superior print quality.



CP-49E chemical system

The CP-49E chemical system guarantees time-saving efficiency. One-touch chemical mixing provides simple, clean and safe processing.

2'28" for a single order of 24 prints*

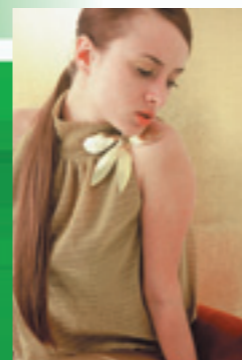
* 4R size (Frontier 570)

With faster across-the-board processing (including dry-to-dry time of only 1'22"), now drop-off, processing, and pick-up can be accomplished in a single trip.

Frontier 570	2'28" (Dry-to-dry: 1'22")
Frontier 550	2'55" (Dry-to-dry: 1'22")
Frontier 370	5'06" (Dry-to-dry: 3'45")



Frontier 570



12-inch print sizes

The wider range of sizes includes prints up to 12 x 18 inches. Even at these large dimensions, the prints have beautiful image quality and crisp, clear resolution.



Only 6.3 m² of installation space required

More compact dimensions and three-sided maintenance gives you greater flexibility and space efficiency in the physical layout of your store.



“Image Intelligence”™

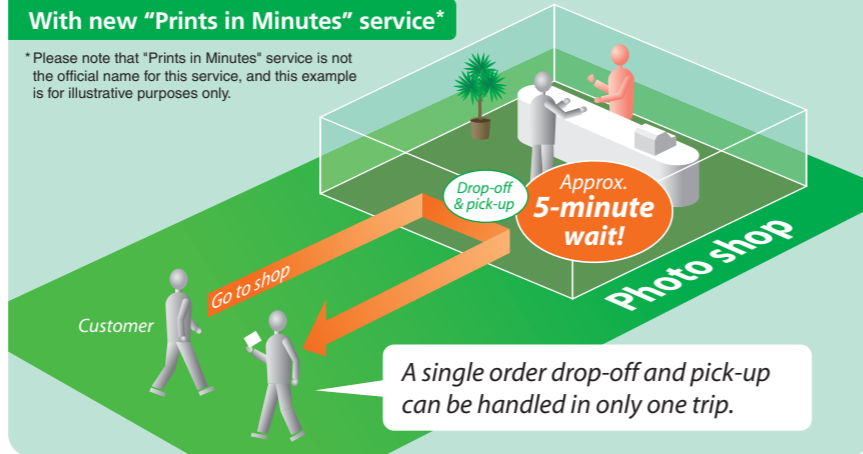
This sophisticated image-enhancing software helps achieve your customers' photographic visions in their prints.

- Full Automatic Red-eye Correction (optional)
- Automatic scratch and dust elimination (standard)

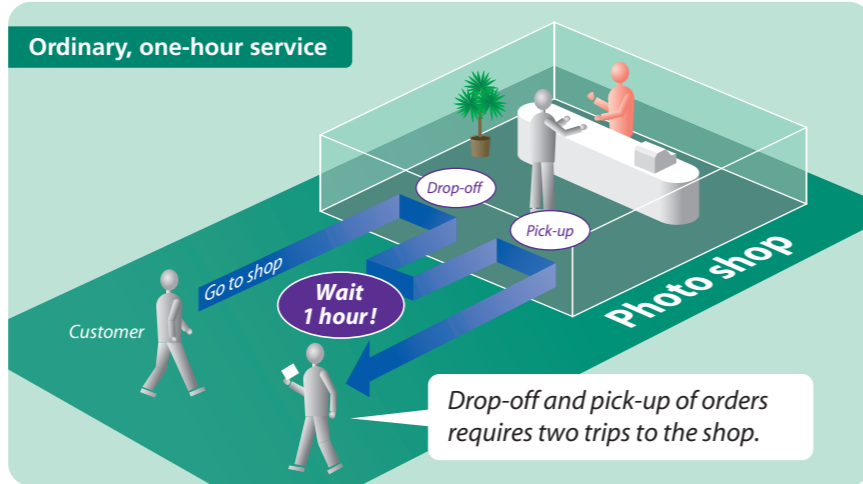
Speedy "Prints in Minutes" service significantly cuts your customers' waiting time

With new "Prints in Minutes" service*

*Please note that "Prints in Minutes" service is not the official name for this service, and this example is for illustrative purposes only.



Ordinary, one-hour service



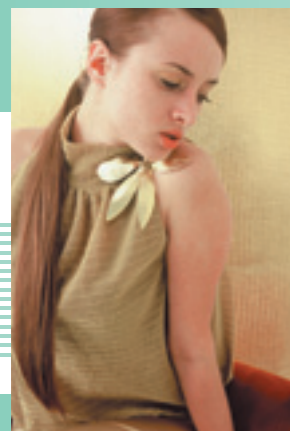
Complete processing in only minutes

The Frontier 550/570 deliver the highest processing speed (for a single order*) ever offered by a Frontier minilab. Give your customers the instant gratification of receiving beautiful, full-quality prints in a matter of minutes. In addition, the Frontier 550/570 make significant leaps in throughput capacity, meaning you'll be able to handle more business in general and offer better and faster service during peak hours of customer demand.

* 24 prints, 4R size per order

Speedy handling of digital camera orders with Digital Photo Center

The Digital Photo Center supports your store operations by dealing with the ever-increasing number of digital media and digital camera orders. With its fast touch-panel entry system, customers can easily enter orders by themselves. And because your staff don't have to attend to customer orders, they'll have extra time to perform other tasks.



Large 12-inch-wide prints

The Frontier 550/570 are set up to produce large-size prints used by professional photographers – up to 12x18 inches – enabling you to offer services to this segment of the market. Even at large dimensions, the prints have beautiful image quality and crisp, clear resolution.

Beautiful prints with minimal effort

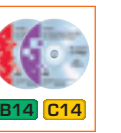
"Image Intelligence" – improved image quality delivered quickly and automatically

Fujifilm's nearly seven decades of accumulated knowledge have gone into the extensive array of digital image-processing software incorporated in the Frontier 550/570. "Image Intelligence" automatically compensates for poor lighting and other problematic conditions, and it also makes skin tones more natural and facial expressions more distinct. And since photo image correction is automatic, processing time is reduced and more incoming orders can be processed.



Full Automatic Red-eye Correction (optional)

Red-eye correction is now fully automated, so there's no need to halt the production flow to make manual selections or adjustments. Sophisticated image algorithms read every single frame as its being processed, and distinguish precisely between human faces and other visual subject matter, correcting only the human faces with red-eyes.



Take full advantage of Fujifilm's promotional tools to publicize Full Automatic Red-eye Correction.

Automatic scratch and dust elimination (standard)

This function corrects for scratches and dust on both the emulsion layer and the film base of the original film using infrared detection and image extrapolation algorithms. Using "Image Intelligence" technology, it automatically corrects the image by extrapolating image data from the surrounding area.



Specialty formats and special services

Various optional software packages give you outstanding flexibility in the menu of services you offer your customers.

Digital camera print service



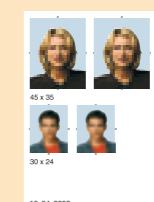
Digital camera photo images in various file formats can be input directly from a variety of camera storage media and computer storage media.



ID photo print service



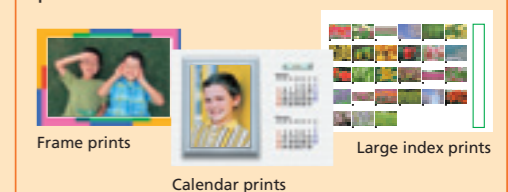
Your customers can order high-quality ID photos from either ordinary film or digital sources. Automatic sizing and trim functions will adjust the relative size of the face in the final photo to meet preset specifications.



Variety print service



Your customers can choose from many attractive specialized print formats.



Watch your business run more smoothly as the FMPC and Frontier Manager streamline your shop's workflow

Frontier Manager Printer Controller (FMPC) can potentially increase processing capacity by up to 40%*.

* Results according to tests conducted by Fujifilm; results may vary under actual production conditions.

- Enhanced production and capacity through simultaneous processing**

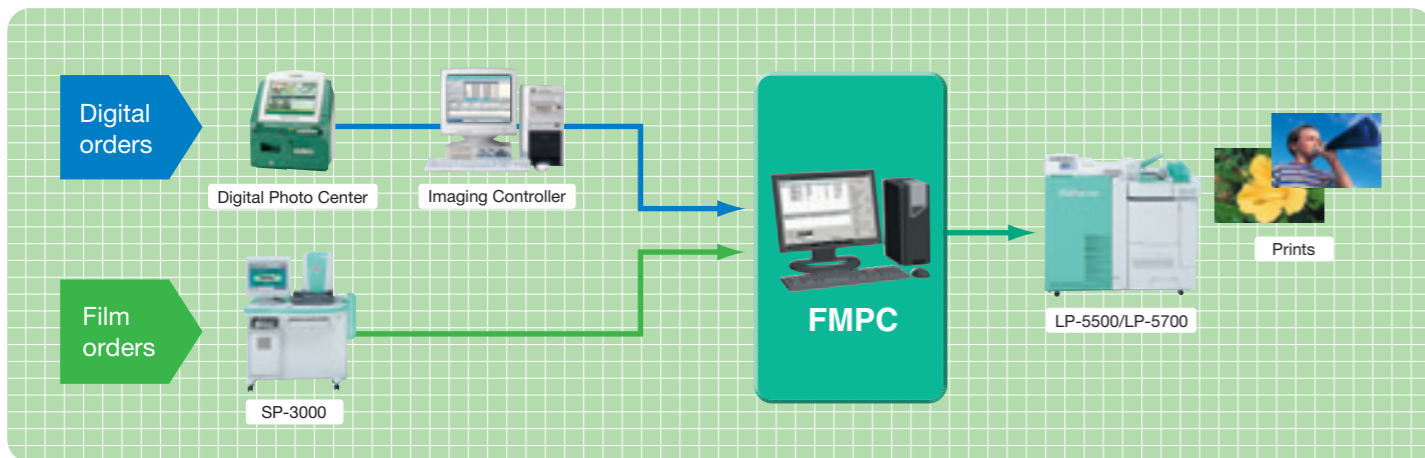
Film and digital image processing can be performed at the same time to eliminate waiting for input and utilize the maximum production capacity of the output unit.

- Increased printing efficiency when combined with Frontier Manager**

Combining the scheduling function of Frontier Manager with FMPC's simultaneous film and digital processing function makes the workflow more efficient. In addition, FMPC groups orders by print width to reduce the number of paper magazine changes.

- More flexibility and better return-on-investment**

FMPC can be installed without having to change most of the Frontier 550/570 systems; so you get maximum processing efficiency and capacity at minimal costs. With FMPC, the Frontier 550/570 are also flexible enough to cope with ever-diversifying print services and increased volume.



Frontier Manager lets you take full control of your store's operations by improving efficiency and productivity in the workflow.

- Improved productivity to reduce workflow errors**

Print operations are automatically set up for reduced-error workflow.

- Easier billing calculations and management**

You can automatically calculate and manage each order within the system, thus reducing the time and potential error of manual calculation.

- Better time management for orders**

Frontier Manager's time-management feature informs the staff of urgent deadline order numbers in red letters to help avoid any delays. Urgent orders are also automatically prioritized.



Enjoy more efficient space and energy usage, and greater convenience in day-to-day operations.

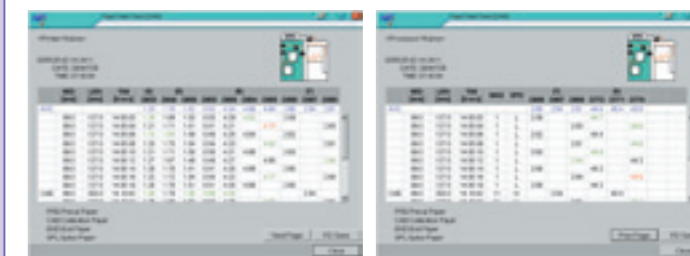
Intuitive user interface for easier operation

The icon-based operations system for the Frontier 550/570 is designed for maximum usability, even by inexperienced staff without special training. Procedural steps and optional choices are laid out clearly onscreen, with context-specific help provided for every step of every operation.



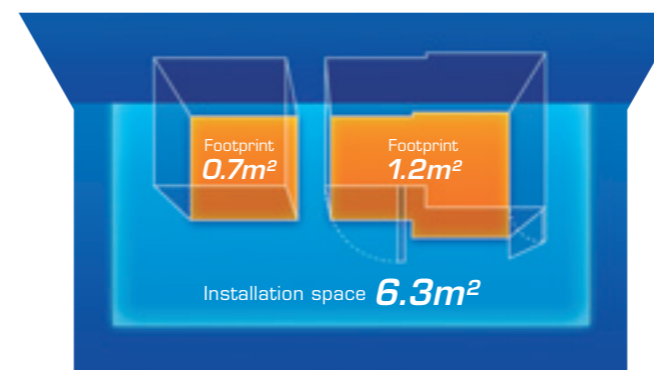
Self-diagnostic system

The Frontier 550/570 run continuous self-diagnostic routines during the course of ordinary operation, and full diagnostic information is available in real time. Potential problems trigger an onscreen alert, so that they can be dealt with as quickly as possible.



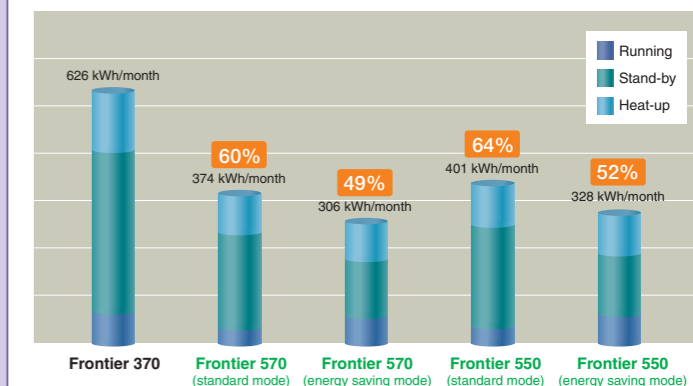
More processing capacity in less space

Despite their greater processing capacities, the Frontier 550/570 are more compact than their predecessors (Frontier 350/370). They also allow greater flexibility in your shop's floor layout thanks to their three-sided maintenance configurations – all maintenance operations can be done from the front or the sides, and there's no need to access the back of the unit. Either unit can be placed against a wall, freeing up floor space for other uses, or allowing you to fit the Frontier into a smaller room to begin with.



Energy-saving design

Along with engineering improvements, the energy-consumption profile of the LP-5500/5700 output units has been readjusted and optimized to reflect the most common usage patterns. The end result is an energy savings of approximately 50% in energy-saving mode, and up to 35~40% in standard mode, compared with the previous model (Frontier 370).



24-, 14- and 7-order sorters

The Frontier 550 is available with an 7-order sorter, while the Frontier 570 offers a choice of either a 14- or 24-order sorter. The top-mounting of the 7- and 14-order sorters eliminates the need for additional footprint space.



12-inch double paper magazine

The two built-in paper magazines can now handle sizes of up to 12 inches. Although the 12-inch paper magazine is wider than the previous model's 10-inch magazine, it's nonetheless 10% lighter in weight. It also incorporates a newly developed mechanism to minimize paper loss when changing magazines.



Fujifilm Digital Minilab Frontier 550/570 Main Specifications

	Input source	Print sizes	Paper widths	Frontier 550	Frontier 570
Processing capacity	135	3R	127 mm	Approx. 1350 prints/hr	Approx. 1800 prints/hr
		4R	152 mm	Approx. 1210 prints/hr	Approx. 1800 prints/hr
		12R	305 mm	Approx. 100 prints/hr	Approx. 100 prints/hr
	Advanced Photo System (IX240)	3R C/H/P-mixed-format prints; 25 exp. roll and index print	89 mm	Approx. 34 rolls/hr	Approx. 50 rolls/hr
Printable films (using standard or optional film carriers)	Media prints (digital still cameras with 2.5 million pixels)	3R	127 mm	Approx. 1350 prints/hr	Approx. 1800 prints/hr
		4R	152 mm	Approx. 1210 prints/hr	Approx. 1700 prints/hr
Print sizes	82.5 x 117 mm ~ 305 x 457 mm				
Processing chemicals	Chemical system CP-49E				
Footprint space	■ Input unit (SP-3000) : Approx. 0.7 m ² ■ Output unit (LP-5500/LP-5700) : Approx. 1.2 m ²				

Input unit SCANNER & IMAGE PROCESSOR Frontier 550 and Frontier 570 (SP-3000)

Type: Floor-type, independent scanner.
 Scanning section: Area CCD with precision pixel shifting system
 Film carriers:

- 135/IX240 automatic film carrier (standard)
 135F/P/Hv/135H (optional); Color/black-white negative, color reversal; Piece and strip film.
 IX240: Color/sepia negative, color reversal; Cartridge and strip film.
- Multi-film carrier MFC10AY (optional)
 110, Advanced Photo System (IX240), 135F, 135P, 135 half, 135FP, 120/220 (6 x 4.5, 6 x 6, 6 x 7, 6 x 8, 6 x 9), 135 reversal mount.

 Image processing: Optimal color reproduction processing, color gradation control, facial expression enhancement, hyper-tone processing, hyper-sharpness processing, monotone finishing, retouching function (dust or scratches on film can be erased automatically in printing), soft focus, red-eye correction processing, and others.
 Display: 17-inch CRT or LCD color display
 Multi-frame display capability (standard 6-frame display, can be set to display single frame or six frames)
 Input light source: LED
 Power requirements: AC100-240V (50/60Hz), 1.0KVA
 Dimensions: 890 (W) x 770 (D) x 1208 (H) mm
 Weight: Approx. 118 kg (with NC 100AY and 17-inch CRT display).

Output unit LASER PRINTER/PAPER PROCESSOR Frontier 550 (LP-5500) and Frontier 570 (LP-5700)

Type: Floor-type, normal light operation (laser printer, processor, cutter, sorter in one unit).
 Exposure system: Scanning exposure system using RGB lasers.
 Paper magazines: Two switchable paper magazines (standard accessory).
 Paper: FUJICOLOR paper (silver-halide).
 Paper widths: 8.9, 10.2, 11.7, 12.7, 15.2, 20.3, 21.0, 25.4, 27.9, 29.7, 30.5 cm.
 Back printing: Two 40-character lines in backside print of information.
 Front printing: Time and date of photograph in black characters in lower-right corner on prints from Advanced Photo System (IX240) cartridge film.
 Index print: Color index print and normal prints can be printed from Advanced Photo System/135 (color negative and sepia) film in one pass (by RGB laser exposure).
 Printer sorter:

- 550: SU700AY, sorting capacity: 7 orders of C/H/P-mixed format prints.
- 570: SU1400AY, sorting capacity: 14 orders of C/H/P-mixed format prints.
- SU2400AY, sorting capacity: 24 orders of C/H/P-mixed format prints.


 Printer condition setup: Semi-automatic calibration by AD300 calibrator.
 Processor carriage: Multi-line, sheet carriage.
 Processing time: Dry-to-dry: 1 min. 22 sec.
 Power requirements: AC200-240V (50/60Hz) Single-phase 24A, Three-phase four-wire, 17A approx. 4.8KVA.
 Dimensions:

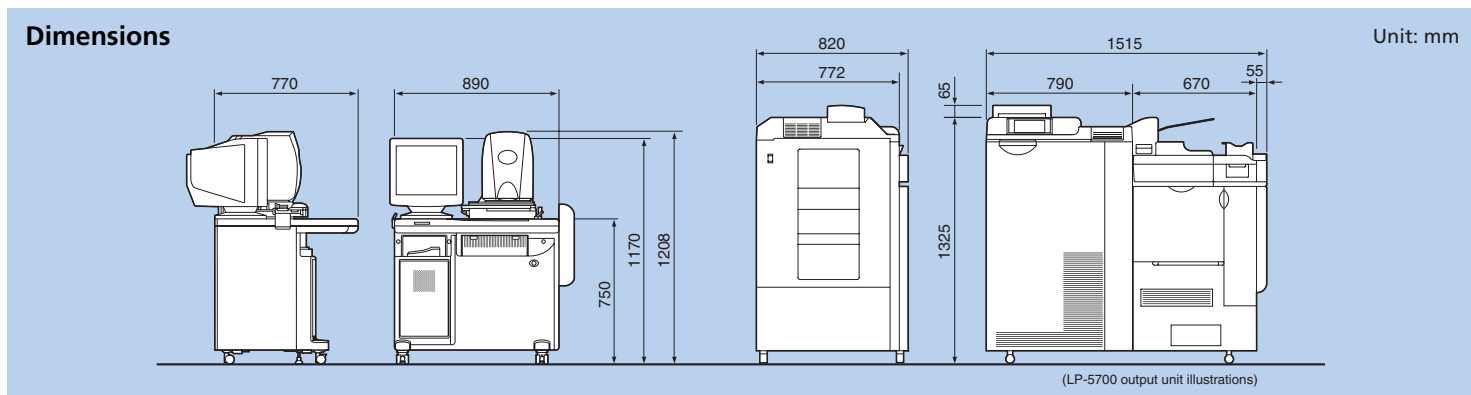
- 550 (with 7-order sorter): 1515 (W) x 820 (D) x 1390 (H) mm.
- 570 (with 14-order sorter): 1515 (W) x 820 (D) x 1390 (H) mm.

 Weights:

- 550 (with 7-order sorter): Approx. 460 kg (510 kg during actual operation)
- 570 (with 14-order sorter): Approx. 470 kg (520 kg during actual operation)

Performance varies depending on processing capabilities of the Imaging Controller.
 Specifications are subject to change without notice.
 All brand names or trademarks are property of their respective owners.

 The Frontier 550/570 have received the UL/CUL/CE Marks for meeting high safety standards.



 **FUJIFILM**
 FUJI PHOTO FILM CO., LTD.
 26-30, NISHIAZABU 2-CHOME, MINATO-KU, TOKYO 106-8620, JAPAN